

# JOYO

## VOCAL LAB

REVOLUTION  
SERIES  
Vocal

### Thank you for purchasing this product!

In order to use this product properly and safely, please read this owner's manual carefully before operating this product, and keep it for future reference.

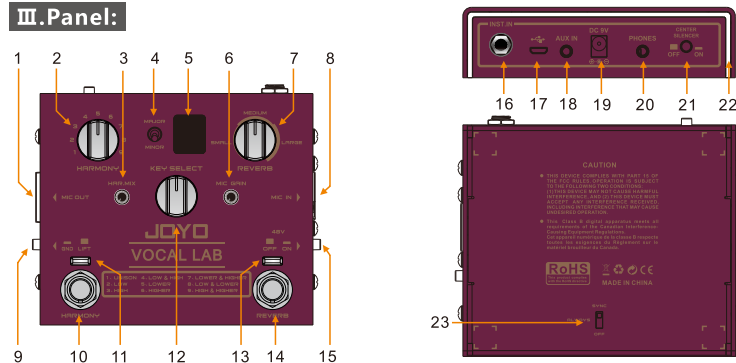
#### I. SAFETY INSTRUCTIONS:

- Don't apply excessive force to the switches or controls.
- Clean only with a clean dry cloth. Don't use inflammable substances such as benzene, thinner, detergent and so on.
- Do not place it in humid areas, so as to avoid damage to the internal circuits.
- The operating voltage is DC9V, don't exceed it, otherwise the product will malfunction.
- The power adapter is not included in the packing list, please buy it separately.
- Please make sure the polarity of your power adapter is the same with what is printed on its outer housing, any error on power polarity would cause damage to the product.
- Please turn on your amplifier after this product is powered on.
- Don't dump this product with household garbage. Proper treatment can reduce pollution and health hazards. Please contact your local dealer for correct approaches.

#### II. FEATURES:

- 9-position vocal HARMONY, 2 harmonies to the maximum; together with 3-position user-friendly vocal Reverb.
- 12-Key are available, together with Maj/Min toggle switch, precise HARMONY.
- With 48V phantom power, compatible for various types of Mic.
- With user-friendly HARMONY and Reverb Footswitches.
- Suitable for both musicians and amateurs.
- Headphones Jack, with AUX IN simple MUTE function, facilitating practice.

#### III. Panel:



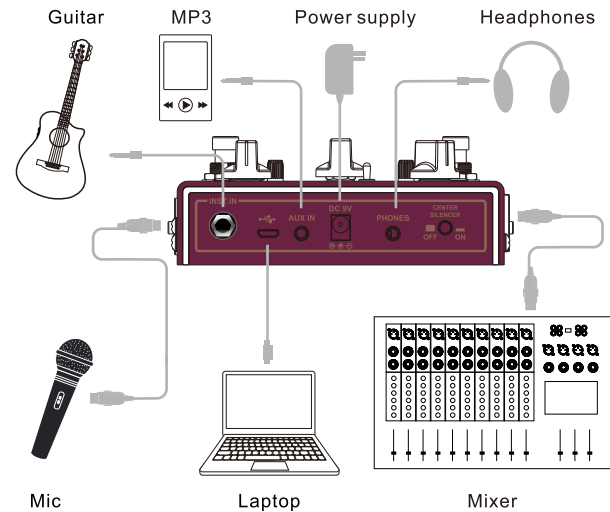
- MIC OUT Vocal effects balanced output Jack:** it can connect to PA system or mixer after the vocal has been processed.
- 9-position HARMONY toggle switch:** for selecting 9 HARMONIES (Please refer to the HARMONY Effects at the end of this owner's manual).
- HAR. MIX knob:** used for adjusting the ratio between dry sound and HARMONY, turn it to the far left, there is no HARMONY, turn it to the far right, there is no dry sound.
- MAJOR/MINOR toggle switch:** for selecting MAJOR and MINOR.
- Nixietube:** indicating Key, the dot at the bottom right means #.
- MIC GAIN Knob:** controls MIC's Gain, there is no level overload indicator on this knob (green: no Overdrive, yellow: about to Overdrive, red: has Overdrive.). Please adjust MIC GAIN within the range of green indicator.
- REVERB Knob:** 3-range Reverb models in all.
- MIC IN:** XLR Balanced Input Jack.
- GND/LIFT:** Balanced Output Grounding Knob.
- HARMONY Footswitch:** the upper part is LED indicator, press this footswitch to turn on HARMONY effect, the related LED is on, press the footswitch again to turn off HARMONY effect, the footswitch indicator goes off.
- HARMONY Footswitch Indicator:** HARMONY Effects Channel's working status indicator.
- Key SELECT:** rotary encoder (you can press it as well).
- REVERB Footswitch Indicator:** REVERB Effects Channel's working status indicator.
- REVERB Footswitch:** the upper part is LED indicator, press this footswitch and turn on the REVERB EFFECT, the related LED is on, press it again and turn off the REVERB EFFECT, the footswitch's indicator goes off.
- 48V phantom power switch:** supplying power to condenser microphone.
- INST IN:** 1/4" mono instrument Input Jack.
- MICRO USB:** for updating firmware.
- AUX IN:** 3.5mm Stereo Audio Auxiliary Input Jack.
- DC 9V:** Power Input Jack (500mA).
- PHONES:** 3.5mm stereo headphones Jack (including Vocal, instruments and AUX IN's signal output, convenient for practice).

- CENTER SILENCER:** The center silencer can remove vocals when using AUX IN.
- Ambience light:** Please refer to No.23 to set up ambience light mode.

#### 23. Ambience control switch:

- SYNC mode—The ambience light flickers or goes off in sync with panel LED indicator when R-16 is activated.
- ALWAYS mode—The ambience light is on.
- OFF mode—the ambience light is off.

#### IV. Connections:



#### V. Operation :

- You can choose song's Key matches with HARMONY through the encoder, if the singing is out of tune, then HARMONY=Pitch when you sing. You can choose C, D, E, F, G, A, B through the Key. The dot at the bottom right means #, you can turn it on/turn it off by rotating and pressing Key Select encoder (the dot won't be activated when you press E and B). You can adjust the mode quickly through Major/Minor toggle switch at the right of the Key Select encoder.
- You can use "CENTER SILENCER" button to remove vocals when there is audio input. (Not suitable for all tracks, suitable for vocals in the middle of the audio). The principle is that one track of the stereo sound is out of phase (the right one), obtaining simple silencer effect.
- Press one footswitch or press 2 footswitches simultaneously and turn it on, you can change the related footswitch's activation mode, Latching (Normal mode) or Momentary (Momentary activation mode, the effects are turned on when you press the footswitch, it's Bypass when you release the footswitch). Once turned on, it's latching mode when the LED light on the footswitch flickers briefly once, it's Momentary mode when the LED light on the footswitch flickers briefly for 4 times.

#### VI. Tone list:

Tone	Inspired by
1. Unison	Adjust the MIC Input's Vocal pitch, and the HARMONY EFFECTS was delayed for a bit, obtaining Unison effect of many people.
2. Low	4th below
3. High	3rd above
4. Low & High	3rd above, a perfect 4th below
5. Lower	6th below
6. Higher	a perfect 5th above
7. Lower & Higher	6th below, a perfect 5th above
8. Low & Lower	a perfect 4th below, and a 6th below
9. High & Higher	3rd above, and a perfect 5th above

#### VII. Specifications:

Instrument Input Impedance: 1MΩ/6.35mm mono Jack  
 MIC Input Impedance: 2.49KΩ/XLR Balanced Jack  
 Headphone Output Impedance: 32Ω/3.5mm stereo Jack  
 MIC Output Impedance: 600Ω/XLR Balanced Jack  
 AUX IN Impedance: 10KΩ/3.5mm stereo Jack  
 Working Current: 500mA  
 Working Voltage: DC 9V (center minus)  
 Dimensions: 130\*110\*50mm  
 Weight: 416g

\*Disclaimer: any specification's update won't be amended in this manual.

#### JOYO TECHNOLOGY CO., LTD

Address: 2/F, Lushi Industry Building, 28th District, Bao'an, Shenzhen, 518101 China.

www.joyo-amps.com Email: info@joyoaudio.com Tel: 0086-755-29765381

JOYO Technology is committed to guarantee the highest quality standards. All Technical Parameters or pictures are only for your information, subject to the actual products.

JOYO

# VOCAL LAB

REVOLUTION  
SERIES  
Vocal

## 感谢购买我们的产品!

请仔细阅读本使用说明书和保管好本说明书以供必要时查阅。  
为了您的安全和能更快地熟练使用产品，使用前请先仔细阅读并理解本说明书中所有的安全与使用说明。本说明书内容仅用于使用说明，可能与实际操作本产品时有所不同。谢谢!

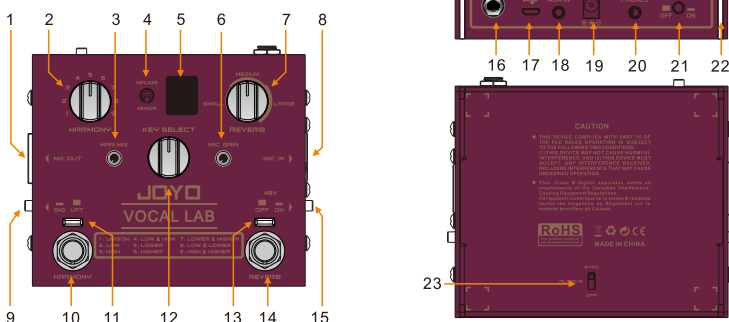
### 一. 注意事项:

- 操作开关和按键时请不要用力过当，以免损坏本机。
- 如果表面脏了，用干净、干燥的布擦拭。不要用苯、天拿水、洗涤剂、可燃性抛光剂等液体清洁剂。
- 请不要将本产品放在潮湿的地方，以免损坏内部电路。
- 本产品的工作电压为DC9V,请勿超过此电压限制，否则将导致本产品损坏。
- 本产品出厂时不附带电源适配器，您需要另行购买。
- 请留意您的电源适配器是否与本产品外壳上所标识的电源极性一致，电源极性错误可能导致本产品损坏。
- 请在本产品电源连接以后，再打开您的放大器电源。
- 不要把本机和生活垃圾一同丢弃。正确的处理可以减少环境污染和健康危害。正确的处理方法各地不同，所以详情请联系当地官方机构。

### 二. 性能概述:

- 9种人声和声档位，最多有2个和声；搭配3档简单易用的人声混响。
- 提供12个Key的选择，配合Maj/Min拨档选择，和声内容准确。
- 搭配48V幻象电源，支持更多麦克风类型。
- 搭配和声及混响开关踩钉，极简操作逻辑。
- 乐手或非乐手用户都可使用。
- 耳机口，搭配AUX IN的简易消声功能，方便练习。

### 三. 面板介绍:



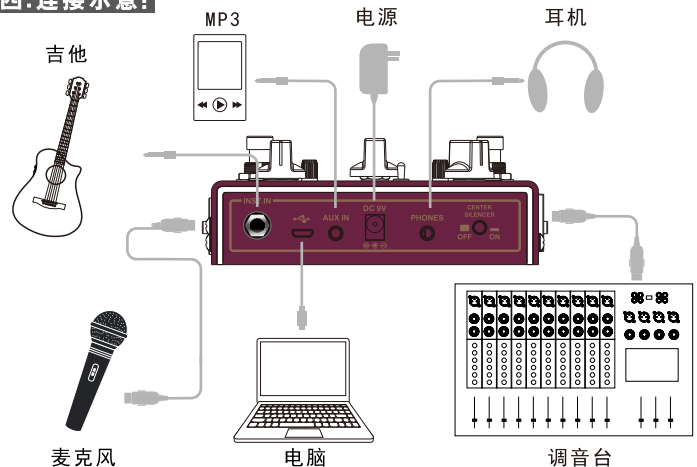
1. MIC OUT 人声效果平衡输出接口：人声处理后可输出到PA系统或调音台。
2. HARMONY 9档档位开关：选择9种和声效果。（和声效果请参考本文末）
3. HAR. MIX旋钮：用于调节干声与和声效果的比例，最小位置没有和声效果，最大位置没有干声。
4. MAJOR/MINOR两档拨档：选择大小调式。
5. 数码管：显示Key，右下小点代表升号#。
6. MIC GAIN旋钮：控制MIC的增益，该旋钮上设有电平过载指示灯（绿色：不过载，黄色：即将过载，红色：已过载），请将MIC增益设置在指示灯显示绿色灯范围内。
7. REVERB旋钮：共有三段不同空间大小的混响模型。
8. MIC IN：XLR平衡输入接口。
9. GND/LIFT：平衡输出接口接地按键。
10. HARMONY踩钉：上部为LED状态灯，踩下该踩钉，和声效果开启，对应的LED灯亮，再次踩下关闭和声效果，踩钉灯灭。
11. HARMONY踩钉指示灯：和声效果通道的工作状态指示灯。
12. KEY SELECT：旋转编码器（带按压）。
13. REVERB踩钉指示灯：混响效果通道的工作状态指示灯。
14. REVERB踩钉：上部同样为LED状态灯，踩下该踩钉，混响效果开启，对应的LED灯亮，再次踩下关闭混响效果，踩钉灯灭。
15. 48V 幻象电源开关：给电容式话筒供电。
16. INST. IN：1/4" 单声道乐器输入接口。
17. MICRO USB：用于固件升级。
18. AUX IN：3.5mm立体声音频辅助输入接口。
19. DC 9V：电源输入接口（500mA）。
20. PHONES：3.5mm立体声耳机接口（包含人声、乐器与AUX IN的信号输出，方便练习）。
21. CENTER SILENCER：使用AUX IN音频辅助输入时的中间消声按键。

22. 氛围灯，请参照23来设置氛围灯模式。

### 23. 氛围灯控制开关:

- SYNC模式--当激活效果器时，氛围灯会与面板LED指示灯同步亮起或熄灭。
- ALWAYS模式--氛围灯常亮。
- OFF模式--氛围灯不亮。

### 四. 连接示意:



### 五. 操作方式:

- 通过编码器选择歌曲的Key来配和声，若唱音为调外音，则和声=演唱音高。Key可选C, D, E, F, G, A, B。右下方小点表示#号，通过循环按下Key Select编码器来选择启用/关闭（其中E和B按下不激活小点）。配合编码器右边的Major/Minor拨档可以快速选择调式。
- 使用音频输入的情况下，可使用“CENTER SILENCER”按键，消除人声（并不适用所有音频，适合人声在中间的音频使用）。原理是立体声音频反相其中一轨（右），得到简单的消音效果。
- 踩住保持某1个或同时踩住2个踩钉并上电，可以改变相应踩钉的激活模式，Latching（常规模式）或Momentary（瞬时激活模式，踩住踩钉效果开启，松开踩钉效果Bypass）。上电时踩钉上方LED灯短暂闪烁1次为Latching模式，短暂闪烁4下为Momentary模式。

### 六. 音色列表:

音色	基于
1. Unison	齐唱效果。将MIC输入的人声音高偏差音分级的音高，并将和声效果后移些许延迟，得到多人齐唱的效果。
2. Low	向下叠加一个4度音。
3. High	向上叠加一个3度音。
4. Low & High	向上叠一个3度，向下叠一个纯4度。
5. Lower	向下叠一个6度音。
6. Higher	向上叠一个纯5度音。
7. Lower & Higher	向下叠加一个6度音，向上叠加一个纯5度。
8. Low & Lower	向下叠加一个纯4度，再向下叠加一个6度音。
9. High & Higher	向上叠加一个3度音，再向上叠加一个纯5度。

### 七. 规格参数:

乐器输入阻抗：1MΩ / 6.35mm单声道插座  
MIC输入阻抗：2.49KΩ / XLR平衡插座  
耳机输出阻抗：32Ω / 3.5mm立体声插座  
MIC输出阻抗：600Ω / XLR平衡插座  
AUX IN输入阻抗：10KΩ / 3.5mm立体声插座  
工作电流：500mA  
工作电压：DC 9V（外正内负）  
尺寸：130\*110\*50mm  
重量：416克

\*免责声明：参数更新恕不另行通知。

### 卓乐产品服务政策

一、在正常使用产品过程中，如果产品出现非人为损坏的性能故障，自购买之日起，消费者享有保修服务，保修期为12个月。

二、有下列情况之一者，消费者不能享受保修权益。

1. 人为损坏；2. 超过保修期；3. 无保修卡及有效发票，但能够证明产品在保修期内的除外；4. 保修卡与产品型号不符，或保修卡被涂改；5. 未按说明书要求使用、维护、保养而造成产品损坏；6. 未经卓乐公司授权，擅自拆卸、维修产品、或浸水、摔坏产品；7. 其他不可抗力造成的损坏。

三、卓乐服务信息:

消费者服务热线：0755-29765390

更多信息请访问：www.joyochina.cn



### 卓乐产品保修卡

产品型号	SN号码
购机日期	姓名
电话	
地址	
发票号码	
名称（加盖公章）	
地址	
电话	

品牌: JOYO 名称: 效果器  
执行标准: QB/T 4324-2012  
制造商: 深圳市卓乐科技有限公司  
地址: 广东省深圳市宝安28区新安三路  
陆氏工业大厦2楼 邮编: 518133  
售后服务热线: 0755-29765390

### 产品合格证

检验结论: 合格  
检验员号: QC 01  
日期: \_\_\_\_\_